



Figure 1: Normal one day old zebrafish embryo shown in a side view with anterior to the left. Image made using brightfield microscopy

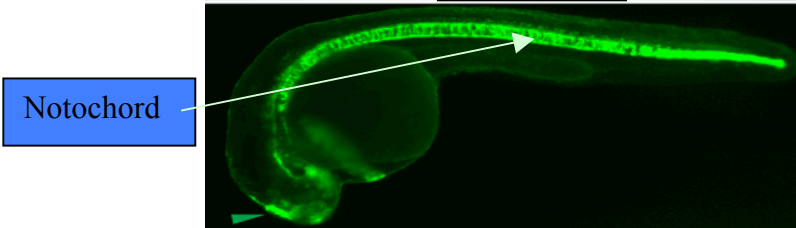


Figure 2: Green Fluorescent Protein expression in the notochord (light arrow) and other tissues of the same fish. Image made using fluorescence microscopy.



Figure 3: Bright field and fluorescent picture overlaid to show the information from both Figure 1 and Figure 2.

**Guide to identifying the eyes and notochord**

Acknowledgements:

Pictures courtesy of Jennifer Liang.

floating head: GFP transgenic line is courtesy of Joshua Gamse and Marnie Halpern